



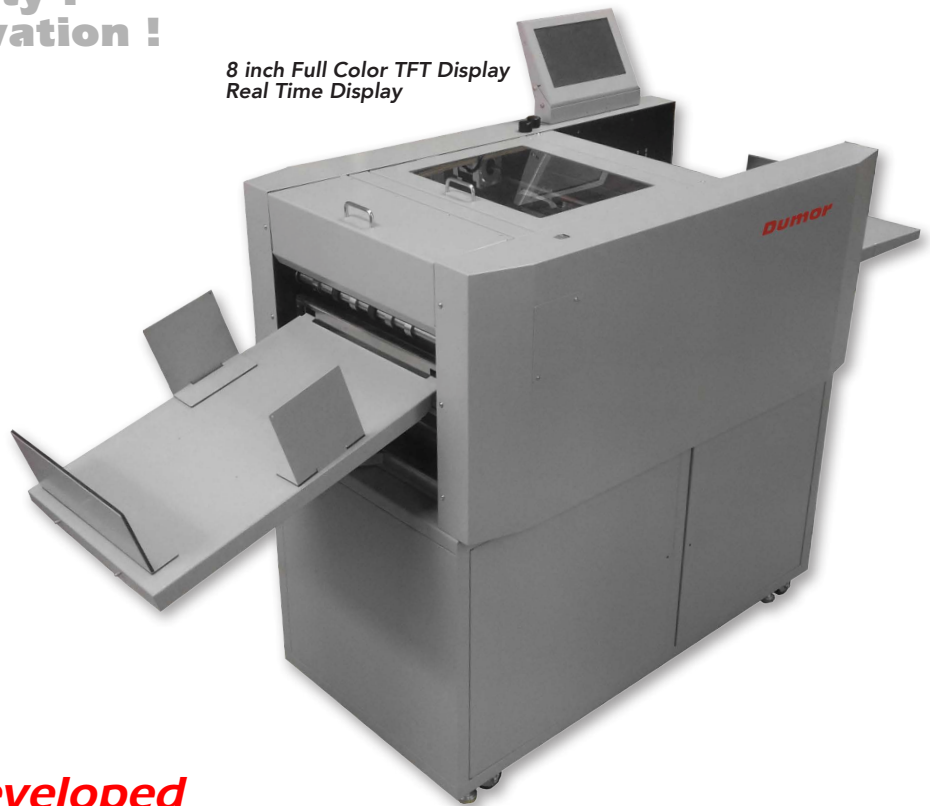
SIGGRAPHICS
DET SÄKRA VALET

**Value !
Quality !
Innovation !**

8 inch Full Color TFT Display
Real Time Display



Strike perf heads



Dumor's newly developed

AEROCARD-STRIKE

**THE NEW AEROCARD-STRIKE WILL DO MORE APPLICATIONS THAN ANY
OTHER DOCUMENT CUTTER, MORE POWERFUL AND COMPACT THAN ANY
OTHER DOCUMENT CUTTER**

APPLICATIONS :

- Greeting cards
- Business cards
- Compliment slips
- Leaflets
- Brochures
- Publicity with tear off strips
- Publicity with tear off tickets
- Vouchers/ raffle tickets
- Book covers - unbleed and full bleed
- Labels min 30 x 50mm
- Price tags
- Banners
- Zigzag documents
- Menus



FEATURES

Sheet flow process:

Infeed and set up:

- Infeed sheets from 105mm high pile from 210x210mm to 330x650mm (optional 900mm)
- Caliper 0,1mm to 0,4mm card (less for laminated stock)
- Bar code reader (option) with 3sec auto setting of all parameters with job preset counter
- X/Y mark reader for image drift correction of up to 3mm (others read only X axis)

Then:

- Slit up to 5 rows or 3 rows with full bleed
- Cross cut up to 32 times per sheet (min cut step 3mm)
- Crease up to 16 times per sheet (length dependent) or cross perf to 16 times

Optional:

- Further Slitting / Perfing / Kiss cutting / Scoring up to 8 tools can be fitted
- Optional fitment of up to 4 strike perf heads for ON/OFF perfing
- Cross perfing tool 24/48tpi

Standard reception tray with 4 separators

Options: Small card reception tray and Extra long tray

SPECIFICATIONS

Hardware:

- Pile depth 105mm top suction belt feeding with infeed skew adjustment ± 3 deg
- Infeed 210 to 210mm to 320 to 650mm standard (Optional long format kit 900mm)
- Thickness 0,1 to 0,4mm caliper ca 100 to 400gsm depending on coating and calendering
- Bar code reader option with automatic set up in ca 3 sec
- X/Y drift sensor with auto sheet by sheet on-the-fly correction
- Optional double ultrasonic sheet detector
- 6 independent slit heads enabling full range of card sizes with no blacked out sizes (not 4 like on other machines)
- Min slit 3mm
- Productivity: a4 sheet s.e.f. with 1 cross cut, process time <3sec
- Cross cut self sharpening blade rated at 6 million cycles min cut 3mm
- Slide in slide out cross creasing bar/optional perfing bar 24 (optional 48 tpi) min step 0,5mm

Additional

- Additional linear tools (options) from 1 to 8
- Edge perf(max 1)
- Normal perf 12tpi
- Scoring @ 1,2 mm
- Slitting
- Kiss cutting for stickers

Optional Strike perfing:

- 1 to 4 channel programmable ON/OFF strike perf with 5mm min step
- Outfeed tray
- Optional Business cards reception tray

Software:

- 8" TFT full colour screen
- Immediate start up no boot up time needed (*Other use a PC that require a few minutes to boot up !*)
- No need for separate computer and long boot up time
- 80 + factory preset jobs grouped by application type
- 50 free nameable memories
- Easy-set custom job programming in just a few steps
- X/Y drift correction
- Bar code application
- Image shrink compensation in x/ y direction
- Image stretch compensation in x/ y direction
- On screen real time full colour line by line job visualisation

Technical menu:

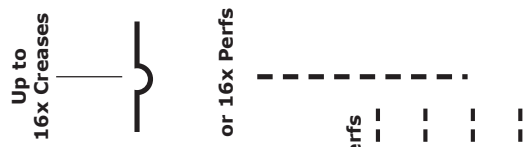
Self check diagnostic software

Recommended service interval software with user alert



TEMPLATE B

OUTFEED

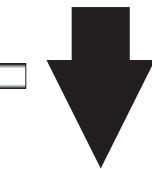
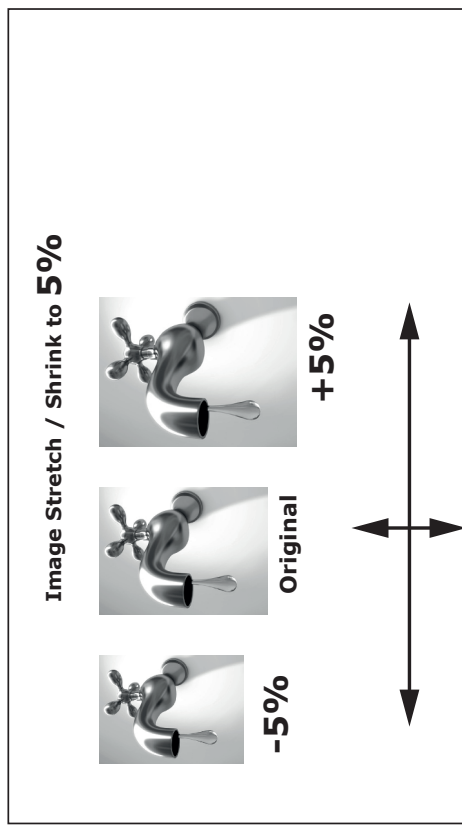


INFEED



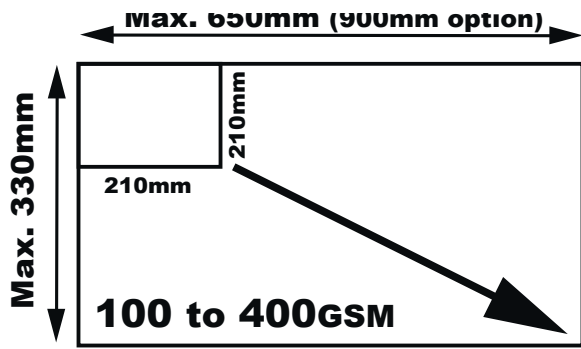
650mm

330mm

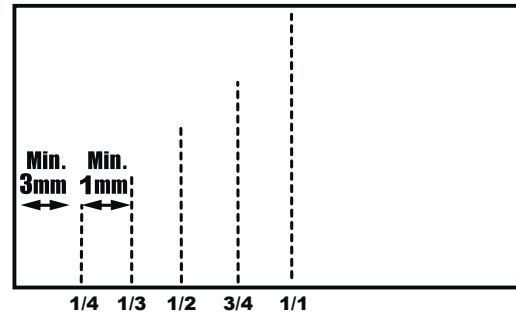


to 4
Strike Perfs

or 16x Perfs



Optional 1 Partial cross perfing



Optional 2

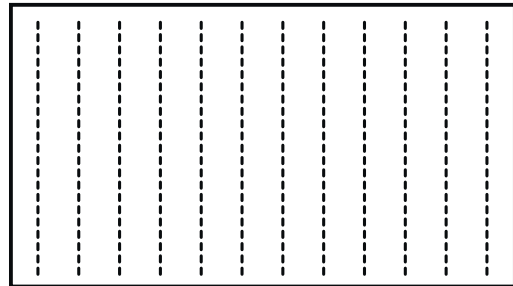
LINEAR PERFING

1 to 8 lines (12tpi) continuous



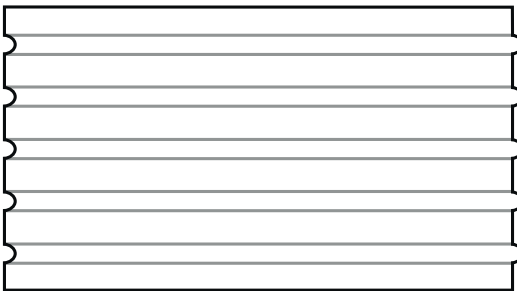
Optional 3

FULL CROSS PERFING 1 to 32 lines (24tpi)



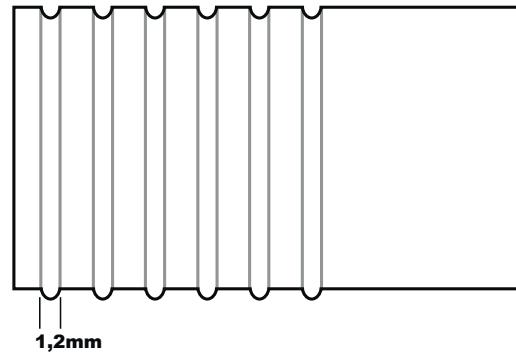
Optional 4

SCORING 1 to 8 lines (1,2mm)



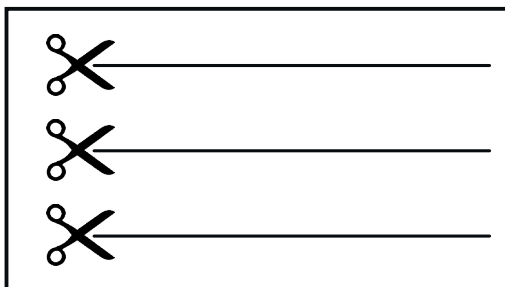
Standard

1 to 32 lines (1,2mm)



Optional 5

SLITTING 1 to 8 lines



Optional 6

KISSCUTTING 1 to 8 lines

