

A-1000, A-1250 Rewinder operation manual

Date: 05.31.2006

Version: 1.2-E

Produced by: Fürcht Zoltán
Address: H-2142 Nagytarcsa, Tessedik Sámuel u. 48.

Telefon: +36 28 450-808, +36 30 948-2491



Content

A-1000, A-1250 brief description	3
Safety instructions	3
Technical data	3
Parts subjected to wear	3
Safety parts	3
Transportation of the A-1000, A-1250 rewinder	4
Parts of the A-1000, A-1250 rewinder	4
Setting up and operating of the A-1000, A-1250 rewinder	4
Maintenance of the A-1000, A-1250 rewinder	6
Frequent troubles	6
CE declaration of conformity	7

Signs:



- Hazard of electric shock



- Other hazard



- Tip

[x/y]



- Picture X part Y

Brief description

- The A-1000, A-1250 rewinder is designed to reduce the operating costs of printing machines that use automatic rubber blanket wipers with rewinding the relatively cheaper big rolls of blanket washing cloth to several smaller ones.
- A-1000, A-1250 is ideal for rewinding some other materials, too.
- The A-1000, A-1250 may not be used for any other than its designated use.

Safety instructions

Please read the operating instructions before you use the A-1000, A-1250 rewinder to prevent accidents and ensure the trouble-free operation.

- The A-1000, A-1250 rewinder may not be operated by anyone who does not read or does not fully understand the operating manual.
- The A-1000, A-1250 rewinder may not be used in wet or explosive environment.
- Always use a proper lighting.
- To ensure the easy unplugging always use a socket in a height between 0,6 and 1,9m.
-  Before beginning the maintenance or repairation make sure that the A-1000, A-1250 rewinder is disconnected.
- Repairs should be carried out by qualified persons using original spare parts, otherwise this may result in considerable danger for the user.
- Keep enough space around the A-1000, A-1250 rewinder.
- Do not wear loose clothing or jewellery, they can be caught in moving parts.
-  Transport and fix the A-1000, A-1250 rewinder only as in part "Transportation of the A-1000 rewinder" described
- Always unplug the A-1000, A-1250 rewinder when not using it.

Technical data:

Weight	28 kg (A-1250: 32 kg)
Dimensions (width/length/height):	110/60/130 cm
Place demand (for the safe operation)	200/200 cm (A-1250: 200/225cm)
Max. roll width:	800 mm (A-1250: 1050mm)
Max. lower (big) roll diameter:	600 mm
Core diameter of the lower (big) roll:	75 mm
Max. upper (small) roll diameter	80 mm
Core diameter of the upper (small) roll:	18mm
Roller speed	0-330 rev./min.
Noise output	less than 70 dB(A)
Operational temperature	+5..+40°C
Store temperature	-25...+55°C (+70°C max. 24 hours)
Humidity	50% (max.+40°C)
Max. operating altitude (from the sea surface)	1000m
Voltage/Current	230V~/0,5A
Power	90W

Parts subjected to wear:

- "o" belt diameter \varnothing 3mm
- Belt length 970 mm
- Motor: FDM / HF(S)-09250
- Always use original spare parts

Safety parts

Name:	Manufacturer:	Type:	Data:
- Motor	FDM	HF(S)-09250	220-240V 0,5A
- Foot switch	FDM	KD-2902	220-240V 1A

Transportation of the A-1000, A-1250 rewinder

Always keep the following instructions when transporting the A-1000, A-1250 rewinder

- To avoid the damage of the cord, wrap it up and fix it to the machine during transportation.
- The A-1000, A-1250 rewinder needs two persons to carry.
- You can hold the R-761 by any part of its support [1/5].
- Do not carry the A-1000, A-1250 rewinder holding by the belt disk [1/3], by the lid of the belt disk [1/2] or by the cord [1/6].
- Use a proper vehicle to transport the A-1000, A-1250 rewinder, and fix it well.
- The A-1000, A-1250 rewinder can be transported standing on its rollers [1/2], and the machine have to be fixed very well.
- Use a soft belt to fix the A-1000 rewinder, do not use any wire that can hurt it.

Parts of the rewinder. (Standard configuration)

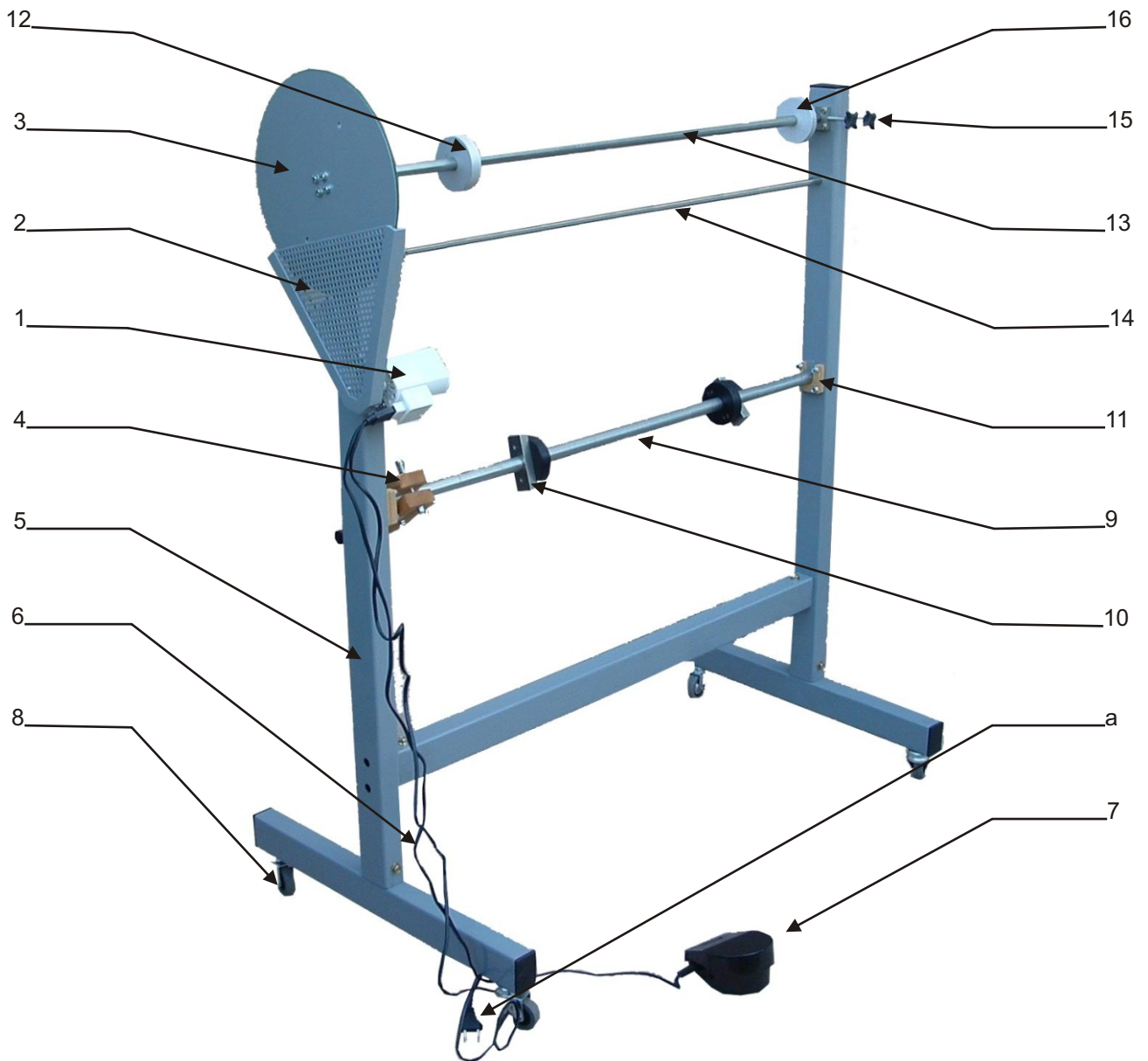
- Foot switch [1/7]: The speed of the motor can be regulated with it. The motor [1/1] stops after releasing the foot switch [1/7] but always unplug it when it is not used.
- Unwinding shaft [1/9]: The lower (big) roll can be fixed on it. The width and the position of the roll can be adjusted with the unwinding score holders [1/10]. The tension of the paperband can be regulated by a simple break [1/4].
- The rewinding shaft [1/13] is a 18 mm diameter tube. Scores with 18-19mm central hole can be fixed on it. The width of the score can be set 0-800 mm.

Setting up and operating of the A-1000, A-1250 rewinder

- Before further use of the A-1000, A-1250 rewinder check it carefully, especially the binding of moving parts, and any other conditions that may affect its operation.
- Check the cord and the switches. Do not use the A-1000, A-1250 rewinder with damaged cord.
- Check the socket before connecting the A-1000, A-1250 rewinder.
- Mount the rewinding score on the rewinding shaft. After loosening the fixing screws [1/15] move backwards the axle of the rotating disc [1/16] and remove the rewinding shaft [1/13]. Loosen the fixing screw of the driving disc [1/12] and put a rewinding score on the rewinding shaft [1/13].
- Mount the rewinding shaft [1/13] with the score in the rewinder.
- Position the fix disk to the score, so that the small stick of the fix disc be attached in the groove of the score. Fix the driving disc [1/12] with its screw.
- Mounting the unwinding roll: Remove the unwinding shaft [1/9] from the rewinder loose the holders of the unwinding roll [1/10]. Remove a holder of the unwinding roll [1/10], which is opposite to the break [1/4] from the unwinding shaft [1/9]. Insert the unwinding roll on the unwinding shaft [1/9] and put back the holder of the unwinding roll [1/10] on the unwinding shaft.
- Position the unwinding roll with its holders so that the side of the roll should be aligned to the sides of the rewinding roll.
- Feed the web material to the machine as it shown in picture 2.
- Stick the end of the web material to the rewinding score, using double-sided adhesive tape or adhesives spray so that it won't get wrinkled.
- Connect the A-1000, A-1250 rewinder to a socket and start the motor.
- After some practice you can make nice rolls.
- After finishing the work with the rewinder do not forget to remove the plug from the socket.

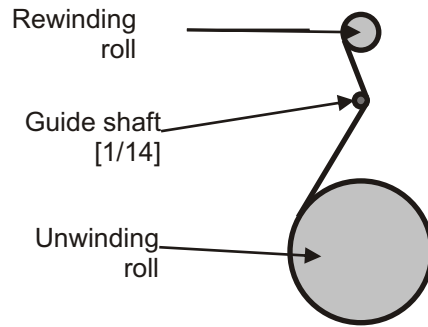
picture-1

Parts of the A-1000, A-1250 rewinder.



- 1. Electromotor
- 2. Lid of the belt disc
- 3. Belt disc
- 4. Break
- 5. Machine support
- 6. Power cable
- 7. Foot switch
- 8. Rollers

- 9. Unwinding shaft
- 10. Unwinding roll holder with a fixing screw
- 11. Unwinding shaft holder
- 12. Driving disc
- 13. Rewinding shaft
- 14. Guide shaft
- 15. Fixing screws of the rotating disk
- 16. Rotating disk



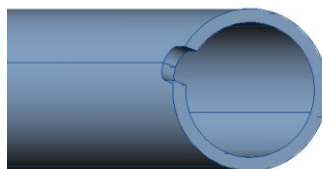
Picture -2
Feeding the web material

Maintenance of the A-1000, A-1250 rewinder

- The maintenance of the A-1000, A-1250 rewinder is reduced to cleaning, and changing the belt if it is defected.
- Do not use aggressive chemicals to clean the rewinder.
- The rewinder can be cleaned with dry cloths.
- If you are using a wet cloths to clean the A-1000, A-1250 be careful, because it can cause corrosion.
- Do not keep the rewinder in wet place.
- After using the A-1000, A-1250 remove the plug from the socket.

Frequent troubles

- *The motor doesn't start.* Check the plug.
- *The rewinding shaft doesn't rotate:* Check the belt.
- *The web material getting wrinkled during rewinding:* Check the tension of the web material, if it is necessary set the strength of the break. When you sticking the end of the roll material to the rewinding shaft take care of that it won't cause the web to be wrinkled. If the roll getting wrinkled, you can help it with smothering the roll with hand.
- ☞ - *The rewinder tears the material.* Reduce the break strength.
- *The rewinding shaft turning not strong enough.* Check the belt, if it is necessary change it.
- *The rewinding shaft doesn't driving the rewinding score:* The stick of the driving disc doesn't connected well to the groove of the score. Use a proper score with a grooving as it is shown in the picture 3.



Picture-3
The groove of the rewinding shaft.

Declaration of conformity

Data of the machine

Produced by: Name: Fürcht Zoltán
Address: 2142 Nagytarcsa, Ganz Á. U. 3/7.
Telefon: +36 1 445-2327, +36 30 948-2491

Type: A-1000, A-1250 Rewinder

Is in compliance with the essential requirements and other relevant provisions of the following directives:

EMC Directive 2004/108/EC
Low voltage directive 2006/95/EC

The product is compatible with the following standards:

EN 60204-1 Safety of machinery. Electrical equipment of machines
EN 1088 Interlocking devices associated with guards
MSZ EN ISO 12100:2011 Safety of machinery

Budapest, 05.10.2014.

Fürcht Zoltán

